

TO: Members, State Board of Higher Education

FROM: Mike Hillman, Vice Chancellor for Academic and Student Affairs
Rebecca Duben-Kalash, Secretary/Academic and Articulation and Transfer Assistant

DATE: February 14, 2011 **Memo #: M-11-09**

SUBJECT: Spring 2011 Enrollment Summary



The Spring 2011 enrollment report is attached. The report, which is being released today, summarizes this semester's enrollments as well as comparisons to previous years.

You will note the first page presents Spring 2011 enrollment highlights. The table on page two provides information on the total headcount along with the student full-time equivalent (FTE) counts. A table on page three describes headcount by tuition residency status. The bar graph on the last page summarizes spring enrollments over the past 10 years.

Please do not hesitate to call with any questions you may have regarding this report.

Attachments

xc: Cabinet

G:\Rebecca\400\Enroll\10-11\Spring Enrollment\Spring 2011 Enrollment Summary Memo.docx

North Dakota University System Enrollment Highlights Spring 2011

One-Year Comparison: Spring 2010 to Spring 2011

Student headcount enrollments increased by 1,794 students (4.1%) from 43,358 last spring to 45,152 this spring.

Student FTE enrollments increased by 886 FTEs (2.5%) from 35,134 last spring to 36,020 this spring.*

Five-Year Trend: Spring 2006 to Spring 2011

Over the last five years, the number of students in the system has increased 13.7%. The NDUS has 5,437 more students in Spring 2011 than in Spring 2006.

FTEs have increased within the same time frame. In 2006, the system served 33,181 FTEs. This spring, the system serves 36,020 FTEs, an increase of 8.6%.*

An increase in the number of students indicates a higher college participation rate. A more modest increase in FTEs indicates a trend toward part time enrollment.

Ten-Year Historical Chart: Spring 2002 to Spring 2011

This spring headcount (45,152) is significantly higher than the 10-year average of 40,179.

The 10-year average for spring FTEs is 33,475. This spring's enrollments are 2,545 FTEs above this average.*

* In August 2006, in order to be more consistent with common practice in enrollment reporting, the SBHE changed the definition of undergraduate FTE to 15 credit hours from 16, and first professional to 1 FTE for each full-time student and 1/2 FTE for each part-time student. In order to provide a consistent basis for comparing 2006 enrollments to prior years, prior year FTE's have been recalculated based on the new definition. The new definition is compatible with national Integrated Post-Secondary Education Data System (IPEDS) reporting requirements.

NORTH DAKOTA UNIVERSITY SYSTEM
DEGREE CREDIT SPRING ENROLLMENT REPORT
Five Year Trend: 2006-2011

INSTITUTION	2006			2007			2008			2009			2010			2011		
	HC	FT	FTE	HC	FT	FTE ¹	HC	FT	FTE	HC	FT	FTE	HC	FT	FTE	HC	FT	FTE
Bismarck State College	3,286	2,009	2,464	3,435	2,029	2,548	3,531	2,210	2,687	3,586	2,284	2,728	3,899	2,487	2,957	3,985	2,486	2,965
Dakota College at Bottineau	511	276	347	619	291	384	610	267	367	598	282	384	755	307	438	868	359	510
Dickinson State University	2,312	1,641	1,932	2,263	1,583	1,889	2,462	1,684	2,021	2,475	1,726	2,058	2,278	1,634	1,941	2,248	1,562	1,879
Lake Region State College	1,466	373	706	1,510	367	717	1,701	390	787	1,635	416	780	1,695	452	836	1,851	475	902
Mayville State University	867	571	677	779	479	596	783	424	549	753	397	518	824	469	590	934	500	633
Minot State University	3,512	2,321	2,790	3,386	2,185	2,616	3,323	2,222	2,599	3,322	2,136	2,534	3,477	2,199	2,639	3,636	2,316	2,763
ND State College of Science	2,255	1,658	1,964	2,266	1,617	1,924	2,315	1,574	1,927	2,272	1,464	1,818	2,401	1,475	1,866	2,639	1,554	1,991
North Dakota State University	11,325	9,044	9,979	11,555	9,328	10,243	11,699	9,468	10,333	12,562	10,187	11,048	13,411	10,801	11,725	13,533	10,768	11,735
University of North Dakota	12,321	9,480	10,850	12,034	9,484	10,516	11,847	9,040	10,164	12,076	9,396	10,449	12,733	9,707	10,847	13,458	10,034	11,267
Valley City State University	960	700	816	927	650	750	946	651	757	959	636	767	1,034	639	771	1,221	718	881
Williston State College	900	501	656	855	446	601	751	400	534	720	342	468	851	381	524	779	354	494
TOTAL	39,715	28,574	33,181	39,629	28,459	32,784	39,968	28,330	32,725	40,958	29,266	33,552	43,358	30,551	35,134	45,152	31,126	36,020

HC-Headcount

All students enrolled regardless of number of credit hours

FT-Full Time

Students enrolled in 12 credit hours or more

FTE - Full Time Equivalent

Undergraduate student credit hours divided by 15 = one student FTE

Graduate student credit hours divided by 12 = one student FTE

Full-time professional students in law and medicine counted as one per enrollment. Part-time professional students in law and medicine counted as 1/2 per enrollment.

¹ In August 2006, in order to be more consistent with common practice in enrollment reporting, the SBHE changed the definition of undergraduate FTE to 15 credit hours from 16, and first professional to 1 FTE for each full-time student and 1/2 FTE for each part-time student. In order to provide a consistent basis for comparing 2006 enrollments to prior years, prior year FTE's have been recalculated based on the new definition. The new definition is compatible with national Integrated Post-Secondary Education Data System (IPEDS) reporting requirements.

HEADCOUNT ENROLLMENTS BY TUITION RESIDENCY STATUS¹

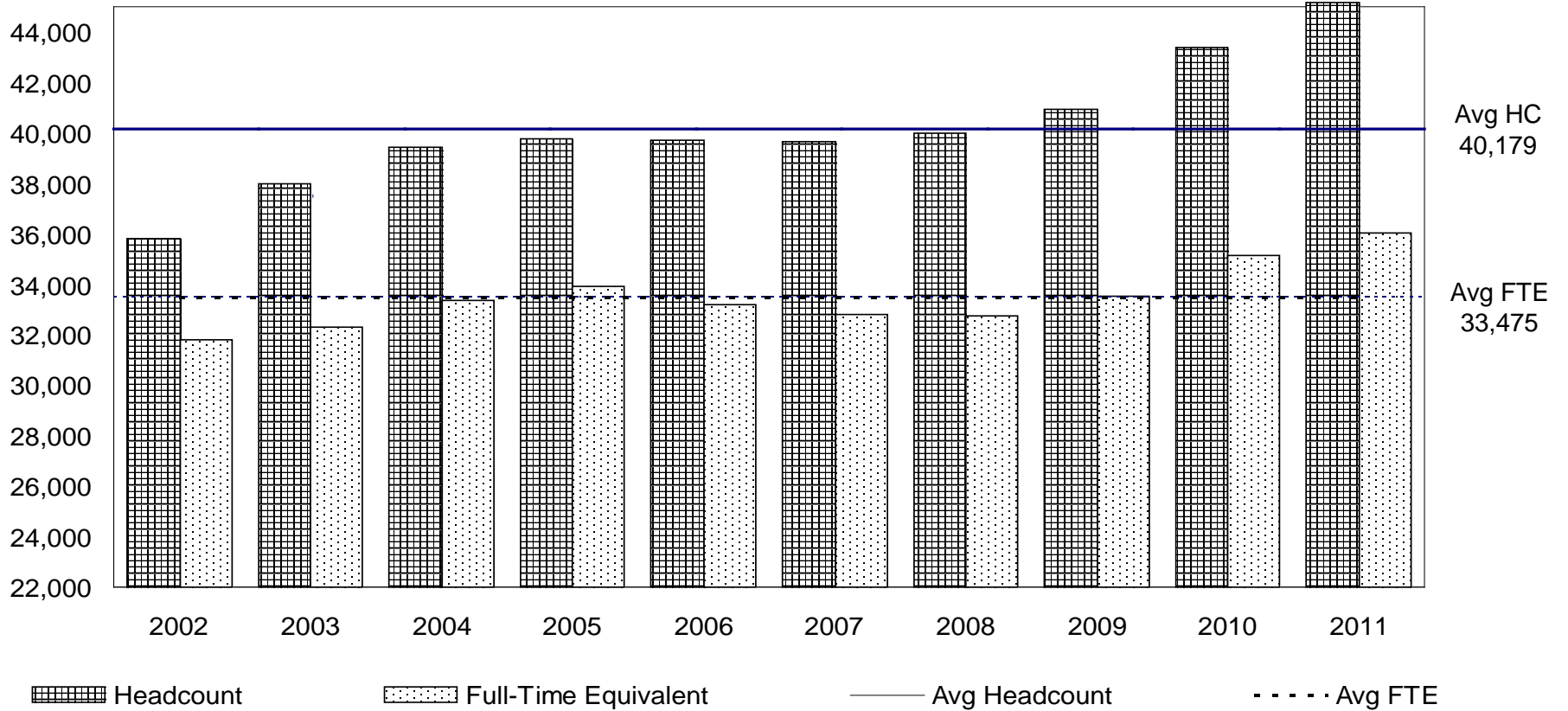
Spring 2011

	BSC	DCB	DSU	LRSC	MASU	MISU	NDSCS	NDSU	UND	VCSU	WSC	TOTALS
RESIDENT												
NORTH DAKOTA	3,211	696	1,380	1,566	632	2,774	1,843	5,875	5,811	786	582	25,156
NON-RESIDENT												
MANITOBA	0	23	3	1	8	65	1	9	74	16	4	204
MINNESOTA	89	11	24	145	105	57	559	5,430	4454	151	8	11,033
OTHER MHEC STATES	148	29	31	23	32	78	30	344	580	31	10	1,336
MONTANA	50	11	171	6	6	94	55	72	135	11	87	698
SASKATCHEWAN	0	7	7	1	1	179	1	2	12	4	5	219
SOUTH DAKOTA	49	0	74	13	6	9	68	218	206	12	8	663
OTHER WICHE STATES	160	28	203	27	88	138	19	144	890	109	47	1,853
OTHER	278	63	355	69	56	242	63	1,439	1,296	101	28	3,990
NON- RESIDENT SUBTOTAL	774	172	868	285	302	862	796	7,658	7,647	435	197	19,996
GRAND TOTALS	3,985	868	2,248	1,851	934	3,636	2,639	13,533	13,458	1,221	779	45,152

Note: Information includes students in extended degree programs and students jointly enrolled through collaborative program arrangements.

¹Official institutionally determined residence for tuition purposes.

**NORTH DAKOTA UNIVERSITY SYSTEM
HEADCOUNT AND FTE ENROLLMENT
Spring Terms 2002-2011**



In August 2006, in order to be more consistent with common practice in enrollment reporting, the SBHE changed the definition of undergraduate FTE to 15 credit hours from 16, and first professional to 1 FTE for each full-time student and 1/2 FTE for each part-time student. In order to provide a consistent basis for comparing 2006 enrollments to prior years, prior year FTE's have been recalculated based on the new definition. The new definition is compatible with national Integrated Post-Secondary Education Data System (IPEDS) reporting requirements.